

Mazda

Werksfarbtonangabe



● **Zweischicht-Metallic-Lackierung**

Für weitgehend effektgleiche Reparatur-lackierungen steht das Standox-Spezial-Metallic-System zur Verfügung.

- **B5 galaix silver-met. (1973)**



- **B8 angel blue-met. (1973)**



- **D2 astro purple-met. (1973)**

MIX 015
MIX 046
MIX 050



- **D6 concorde silver-met. (1973)**



- **D8 olive-met. (1973)**

MIX 125
MIX 018
MIX 112
MIX 061



- **D9 alexandrite gold-met. (1973)**

MIX 018
MIX 134
MIX 125
MIX 010
MIX 112



- **E5 green-met. (1973)**

MIX 015
MIX 125
MIX 024
MIX 061



- **D4 norden oliv-met. (1974)**



● **Zweischicht-Metallic-Lackierung**

Für weitgehend effektgleiche Reparatur-lackierungen steht das Standox-Spezial-Metallic-System zur Verfügung.

● **E7 cedar green-met. (1974)**

MIX 018
MIX 112
MIX 123
MIX 061
MIX 134



● **F3 iris blue-met. (1974)**

MIX 015
MIX 053
MIX 112
MIX 050



● **F8 jasper green-met. (1975)**

MIX 018
MIX 123
MIX 061
MIX 112

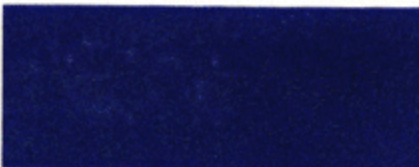


● **N1 sunstone brown-met. (1975)**

MIX 134
MIX 015
MIX 112
MIX 043



● **A1 royal blue-met. (1977)**



● **A2 pulser blue-met. (1977)**



● **A7 marine blue-met./D (1977)**



● **F9 beech green met. (1977)**



● **Zweischicht-Metallic-Lackierung**

Für weitgehend effektgleiche Reparatur-lackierungen steht das Standox-Spezial-Metallic-System zur Verfügung.

● **K1 cygnas silver-met. (1977)**

MIX 015
MIX 136
MIX 112
MIX 134



● **K3 sunbeam silver-met. (1977)**

MIX 015
MIX 134



● **M1 lynx gold-met. (1977)**



● **M2 placer gold-met. (1977)**



● **Y1 ascot brown-met. (1977)**



● **Y2 jacal brown-met. (1977)**



BD caribbean blue (1967)

MIX 051
MIX 011
MIX 010
MIX 050



ER nebula green (1967)

MIX 011
MIX 024
MIX 010
MIX 060



GG bristol grey (1967)

MIX 010
MIX 011
MIX 024
MIX 032

**RC granada red (1967)****WB chamonix white (1967)**

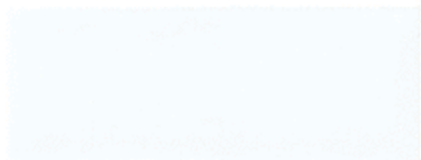
MIX 010
MIX 024
tonen mit
MIX 033

**WC silky white (1967)**

MIX 013
MIX 011
MIX 024
MIX 032

**WM swan white (1967)**

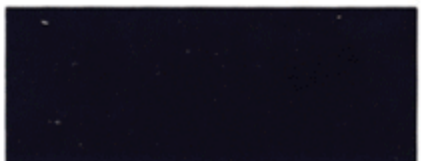
MIX 010
MIX 051
MIX 011

**YC saturn yellow (1967)**

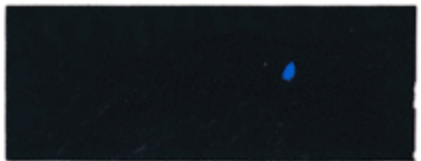
MIX 010
MIX 020
MIX 060

**pacific blue (1971)**

MIX 051
MIX 060
MIX 011
MIX 010

**EQ cosmic green (1971)**

MIX 060
MIX 011
MIX 024
MIX 010



AD polarlight blue (1972)

MIX 053
MIX 061
MIX 112
MIX 011



AM phönix blue (1972)

MIX 010
MIX 051
MIX 060
MIX 011



EU earth green (1972)

MIX 022
MIX 010
MIX 021
MIX 060
MIX 011



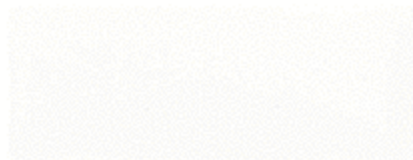
EX neptune green (1972)

MIX 061
MIX 011
MIX 032
MIX 010



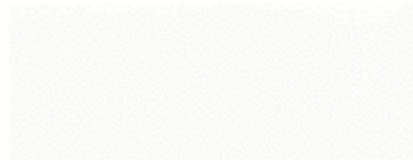
WA eiger white (1972)

MIX 010
MIX 011
MIX 021
tönen mit
MIX 061



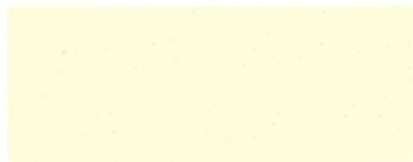
WP nova white (1972)

MIX 010
MIX 024
MIX 051
tönen mit
MIX 011



YA moonlight yellow (1972)

MIX 010
MIX 020
MIX 024
MIX 011



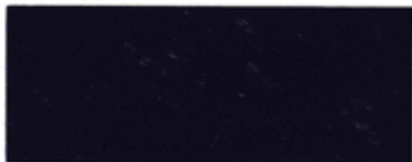
YG flare yellow (1972)

MIX 010
MIX 020
MIX 024
MIX 061



AP lilac blue (1974)

MIX 050
MIX 051
MIX 011
MIX 010



AT skyish blue (1974)

MIX 051
MIX 010
MIX 011



AU sealike blue (1974)

MIX 060
MIX 051
MIX 010
MIX 011



FB helios green (1974)

MIX 024
MIX 010
MIX 022
MIX 051



ND chestnut brown (1974)

MIX 022
MIX 032
MIX 011
MIX 010



RA cardinal deep red (1974)

MIX 144
MIX 031
MIX 010
MIX 011



RQ salvia red (1974)

MIX 031
MIX 043
MIX 011
MIX 010



WR marguerite white (1974)

MIX 010
MIX 024
MIX 011
MIX 021



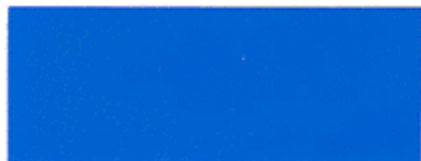
YL brawny yellow (1976)

MIX 024
MIX 010
MIX 032
MIX 011



AY impulse blue (1977)

MIX 010
MIX 051
MIX 011



FP muscat green (1977)

MIX 021
MIX 060
MIX 010
MIX 022
MIX 011



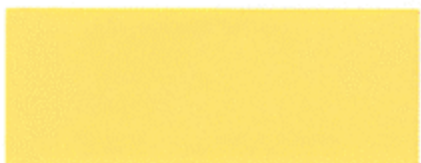
RS grand prix red/H (1977)

MIX 010
MIX 031
MIX 030
MIX 011



YQ york yellow/GE (1977)

MIX 010
MIX 021
MIX 030
MIX 011



FN prairie green (1977)

MIX 021
MIX 010
MIX 051
MIX 011



OC clair orange (1977)

MIX 024
MIX 021
MIX 010
MIX 030
MIX 011



YR tunder yellow (1977)

MIX 020
MIX 010
MIX 011
MIX 061



- A8 starlight blue-met. (1977)



- Y4 lordly brown-met. (1977)



- E6 beat black-met. (1978)



- G2 pearl green-met. (1978)



- M3 imperial gold-met./H (1978)



- N2 brown-met. (1978)



- P2 splendor purple-met. (1978)



RU joyful red/H (1978)

MIX 031

MIX 022

MIX 010

MIX 011



● **Zweischicht-Metallic-Lackierung**

Für weitgehend effektgleiche Reparatur-
lackierungen steht das Standox-Spezial-
Metallic-System zur Verfügung.

FH palm green (1978)

MIX 011
MIX 022
MIX 010
MIX 033



FM islet green (1978)

MIX 112
MIX 022
MIX 010
MIX 061



VE gleam ivory/GR (1979)

MIX 010
MIX 021
MIX 011
MIX 022
MIX 030



YU spark yellow (1979)

MIX 010
MIX 123
MIX 011
MIX 144



YW space yellow (1979) Typ 1800

MIX 021
MIX 010
MIX 024
MIX 011



● G4 mach green-met.



● **Zweischicht-Metallic-Lackierung**

Für weitgehend effektgleiche Reparatur-
lackierungen steht das Standox-Spezial-
Metallic-System zur Verfügung.

AX glacial blue (1979)

MIX 510
MIX 551
MIX 011
MIX 050



NG reddish brown (1979)

MIX 011
MIX 533
MIX 043
MIX 510



VD ceramic beige (1979)

MIX 510
MIX 024
MIX 011



VF calm beige (1979)

MIX 510
MIX 024
MIX 011
MIX 533



YP new gunian yellow (1979)

MIX 521
MIX 510
MIX 530
MIX 011



● M5 maya gold-met. (1979)



● R3 renaissance red-met. (1979)



● U3 abyssal blue-met. (1979)



● Zweischnitt-Metallic-Lackierung

Für weitgehend effektgleiche Reparatur-
lackierungen steht das Standox-Spezial-
Metallic-System zur Verfügung.

● **Zweischicht-Metallic-Lackierung**

Für weitgehend effektgleiche Reparatur-lackierungen steht das Standox-Spezial-Metallic-System zur Verfügung.

● **A3 galaxy blue-met. (1977)**

MIX 112
MIX 554
MIX 592
MIX 050
MIX 010



● **A4 shining blue-met. (1977)**

MIX 590
MIX 053
MIX 011
MIX 050
MIX 010



● **A5 windsor blue-met. (1977)**

MIX 051
MIX 592
MIX 590
MIX 150
MIX 011
MIX 010



● **P1 elder purple-met. (1977)**

MIX 112
MIX 593
MIX 125
MIX 050
MIX 144
MIX 010



● **W2 onyx brown-met. (1977)**

MIX 134
MIX 011
MIX 112
MIX 592
MIX 125



● **A9 daytona blue-met. (1979)**

MIX 554
MIX 591
MIX 590
MIX 050
MIX 112



● **K6 crystal silver-met./D (1979)**

MIX 590
MIX 591
MIX 150
MIX 051
MIX 011
MIX 010



● **K8 tornado silver-met. (1979)**

MIX 112
MIX 590
MIX 591
MIX 051
MIX 010
MIX 050

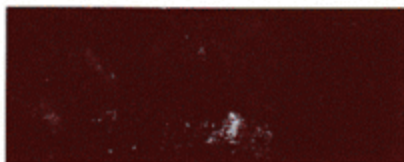


● **Zweischicht-Metallic-Lackierung**

Für weitgehend effektgleiche Reparatur-lackierungen steht das Standox-Spezial-Metallic-System zur Verfügung.

NC maroon (1979)

MIX 030
MIX 011
MIX 043
MIX 031
MIX 010



RT cyclone red (1979)

MIX 144
MIX 030
MIX 011
MIX 010



● **M4 solar gold-met. (1979)**

MIX 125
MIX 590
MIX 134
MIX 591



● **U2 stardust blue-met./BL (1979)**

MIX 590
MIX 150
MIX 554
MIX 011
MIX 010



● **Y5 sonic bronze-met. (1979)**



● **Y6 indy maroon-met. (1979)**

MIX 134
MIX 043
MIX 591
MIX 112
MIX 042
MIX 010



● **Y8 bronze brown-met./R (1979)**

MIX 134
MIX 591
MIX 043
MIX 022
MIX 010
MIX 011



● **Y9 radiant copper-met. (1979)**

MIX 591
MIX 125
MIX 140
MIX 035
MIX 043



● **Zweischicht-Metallic-Lackierung**

Für weitgehend effektgleiche Reparatur-lackierungen steht das Standox-Spezial-Metallic-System zur Verfügung.

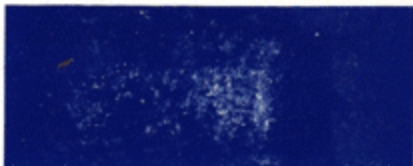
DC nile blue (1980)

MIX 051
MIX 010
MIX 545
MIX 011



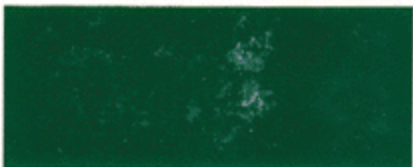
DE max blue (1980)

MIX 051
MIX 010
MIX 011
MIX 123



FE stella green (1980)

MIX 560
MIX 024
MIX 527
MIX 010
MIX 011



WT formular white (1980)

MIX 010
MIX 024
MIX 111
MIX 151
MIX 527



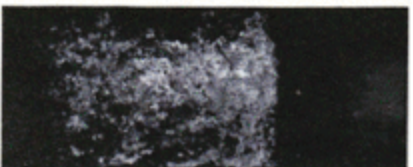
● **C6 cruz silver-met. (1980)**

MIX 590
MIX 011
MIX 053
MIX 529
MIX 010



● **G1 dark green-met. (1980)**

MIX 011
MIX 061
MIX 590
MIX 125
MIX 010



● **G6 lime green-met./GE (1980)**

MIX 590
MIX 136
MIX 061
MIX 011
MIX 022
MIX 010



● **S2 noble grey-met. (1980)**

MIX 011
MIX 590
MIX 591
MIX 051
MIX 050



● **T1 terra brown-met. (1980)**

MIX 125
MIX 042
MIX 011
MIX 590
MIX 144
MIX 591



● **T2 sicily brown-met. (1980)**

MIX 134
MIX 590
MIX 125
MIX 042
MIX 011



● **V2 honey gold-met. (1980)**

MIX 590
MIX 125
MIX 529
MIX 011
MIX 010



● **Y3 desert brown-met. (1980)**

MIX 590
MIX 134
MIX 125
MIX 112
MIX 042



● **Y7 rose wood-met. (1980)**

MIX 042
MIX 591
MIX 125
MIX 112
MIX 545



DA le mans blue (1981)

MIX 010
MIX 052
MIX 011
MIX 050



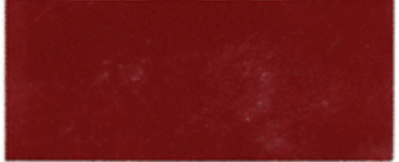
DB hard blue (1981)

MIX 051
MIX 010
MIX 024
MIX 011
MIX 527



NK ross brown (1981)

MIX 031
MIX 011
MIX 043
MIX 010



● Zweischicht-Metallic-Lackierung
Für weitgehend erfolgreiche Reparatur-
lackierungen steht das Standox Spezial-
Metallic-System zur Verfügung.

RX hardy red (1981)

MIX 042
MIX 144
MIX 011
MIX 010



VG light beige (1981)

MIX 010
MIX 024
MIX 011
MIX 031



YY bean yellow (1981)

MIX 010
MIX 123
MIX 024
MIX 527
MIX 011



● A6 mississippi blue-met. (1981)

MIX 590
MIX 051
MIX 011
MIX 050
MIX 010



● G7 olive green-met. (1981)

MIX 590
MIX 529
MIX 010
MIX 011



● R6 solar orange-met. (1981)

MIX 593
MIX 140
MIX 022
MIX 125



● S3 chateau silver-met. (1981)

MIX 590
MIX 011
MIX 125
MIX 010
MIX 151
MIX 061



● T3 planet maroon-met. (1981)

MIX 134
MIX 043
MIX 590
MIX 011
MIX 591
MIX 031



● Zweischicht-Metallic-Lackierung
Für weitgehend effektgleiche Reparatur-
lackierungen steht das Standox Spezial-
Metallic-System zur Verfügung.

STANDOX

MAZDA 17
(oder Blatt 18)

EB willow green (1981)



● U9 seaside blue-met. (1981)



● G6 lime green-met./GR
(1981)



● K6 crystal silver-met./H
(1981)



● U1 arctic blue-met. (1981)



● U5 submarine blue-met.
(1981)



● U6 misty blue-met. (1981)



● U8 caspian blue-met. (1981)



●
Zweischicht-Metallic-Lackierung
Für weitgehend effektgleiche Reparatur-
lackierungen steht das Standox Spezial-
Metallic-System zur Verfügung.

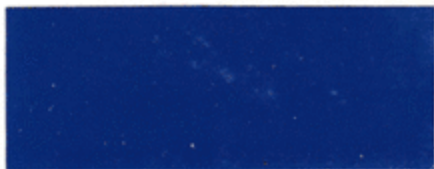
STANDOX

MAZDA 18
(oder Blatt 19)

FR pine green (1981)



AK olympia blue (1981)



RH sunrise red/BL (1981)



RU joyful red/D (1981)



DH reine blue (1982)



NM copper brown (1982)



RZ mirano red (1982)



WU dover white (1982)



STANDOX

MAZDA 19
(oder Blatt 20)

- G9 alton green-met. (1982)



- H1 sparkling black-met.
(1982)



- M6 shine gold-met. (1982)



- P3 city purple-met. (1982)



- R8 canyon brown-met.
(1982)



- T5 havanna brown-met.
(1982)



- T8 selby brown-met. (1982)



- W1 opal green-met. (1982)



● Zweischicht-Metallic-Lackierung
Für weitgehend effektlosche Reparatur-
lackierungen stellt das Standox Spezial-
Metallic-System zur Verfügung.

DD baikal blue (1983)



DP sydney blue (1983)



DG aqua blue (1984)



GS corby blue (1983)



GV marine blue (1984)



GW aege blue (1984)



NP pure red (1984)



SA sunset wine (1983)



SA santos red (1983)



TC orient yellow (1983)



+ K5 jet silver-met. (1984)



+ L3 ondo blue-met. (1984)



+ L5 twillight maroon-met.
(1984)



+ L6 rhyll blue-met. (1984)



+ P4 sunburn red-met. (1983)



+ P5 sophia red-met. (1983)



+ P7 antique gold-met. (1983)



+ P8 seto brown-met. (1984)



+ Q1 california brown-met.
(1984)



+ R7 persimmon red-met. (1983)



+ Zweischicht-Metallic-Lackierung



Registered trade marks of Balm Paints Ltd.

1970-71

IMPORTED MAZDA

Colour Identification

No colour identification is used on imported Mazda vehicles.

Refinish Material

Finished in Baked Enamel.

Use Dulon E-type for touch-up

Price Group ① ② ③

BODY COLOURS



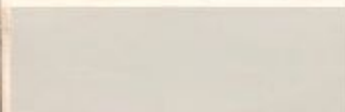
Herschel Orange—13356 Group ③



Moonlight Yellow—13355 Group ①



Saturn Yellow—13181 Group ①



Eiger White—13183 Group ①



Grace Grey—13185 Group ①

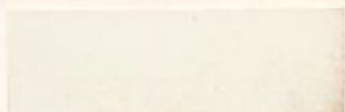
Colours shown are for eye-matching use only. Detailed formulae in DULON are available in the 3D Refinish Tinting System.

NOTE: Colour chips are matched as closely as possible to samples approved by Mazda Motors. It is not possible to make provision for any colour variation between vehicles.

BODY COLOURS



Swan White—13182 Group ①



Aurora White—13180 Group ①



Mars Red—13186 Group ③



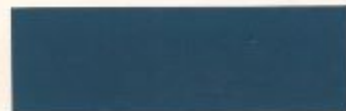
Mercury Blue—13188 Group ①



Polarlight Blue—13184 Group ①



Nebula Green—13189 Group ①



Jupiter Blue—13187 Group ①



Cosmic Green—13353 Group ②



Sunrise Red—13354 Group ②

The following body colours are also used: Lark Beige —1991, Refer 1968, Page 6
Granada Red —11736, Refer 1969, Page 7

811 X

811 X

811 X

BODY COLOURS


Alexandrite Gold (Met.)—15668 Code: D9



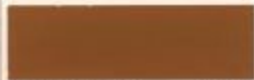
Angel Blue (Met.)—15778 Code: B8



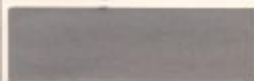
Astra Purple (Met.)—13888 Code: D2



Cedar Green (Met.)—17558 Code: E7



Chestnut Brown—17535 Code: ND



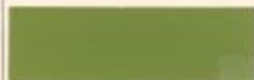
Concorde Silver (Met.)—15967 Code: D6



Espace Blue (Met.)—17347 Code: C7



Galax Silver (Met.)—15777 Code: B5



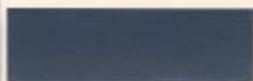
Hellas Green—17537 Code: SB

1973/75 MAZDA VEHICLE COLOURS

These vehicles are finished in Acrylic Enamel.
Refresh with DULON® Acrylic Lacquer.

Colour Identification

Colour Code appears on tag on support bar
running parallel to radiator.

BODY COLOURS


Iris Blue (Met.)—11193 Code: F3



Jasper Green (Met.)—17560 Code: F8



Jewel Green—15993 Code: D8



Lilas Blue—17538 Code: AP



Marguerite White—17543 Code: WR

BODY COLOURS

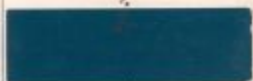

Neptune Green—15712 Code: EX



Norden Olive (Met.)—17060 Code: D1



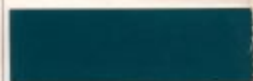
Olivine Green (Met.)—15866 Code: E5



Olympia Blue—15957 Code: AK



Salvia Red—17534 Code: RQ



Sealike Blue—17536 Code: AU



Skyish Blue—17539 Code: AT



Sunset Purple—15715 Code: P8



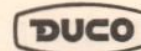
Sunstone Brown (Met.)—17577 Code: N1



REG'D



REG'D



REG'D

BODY COLOURS



Ascot Brown (Met.)—30019 Code: Y1



Beech Green (Met.)—30396 Code: F9



Brawney Yellow—17983 Code: YL



Brilliant Black—30372 Code: PZ



Cygnus Silver (Met.)—30018 Code: K1



Deep Cardinal Red—30329 Code: RA



Grand Prix Red—30371 Code: RS



Impulse Blue—30395 Code: AY



Jackal Brown (Met.)—17975 Code: Y2

1976/77 MAZDA VEHICLE COLOURS

These vehicles are finished in Acrylic Enamel.
Refinish with DULON* Acrylic Lacquer.

Colour Identification

Colour Code appears on tag on support bar
running parallel to radiator.

BODY COLOURS



Lynx Gold (Met.)—30409 Code: M1



Marine Blue (Met.)—30408 Code: A7



Muscat Green—30370 Code: FP



Placer Gold (Met.)—17974 Code: M2



Pulser Blue (Met.)—30394 Code: A2



Royal Blue (Met.)—30021 Code: A1



Sunbeam Silver (Met.)—30413 Code: K3



Yolk Yellow—30369 Code: YQ